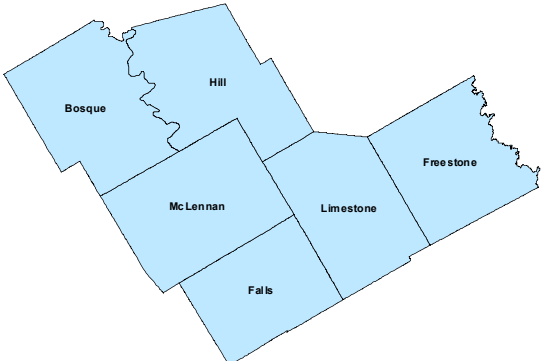
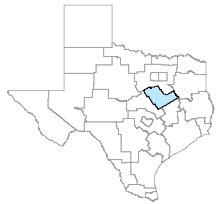


## Heart of Texas Workforce Development Area

April 2026



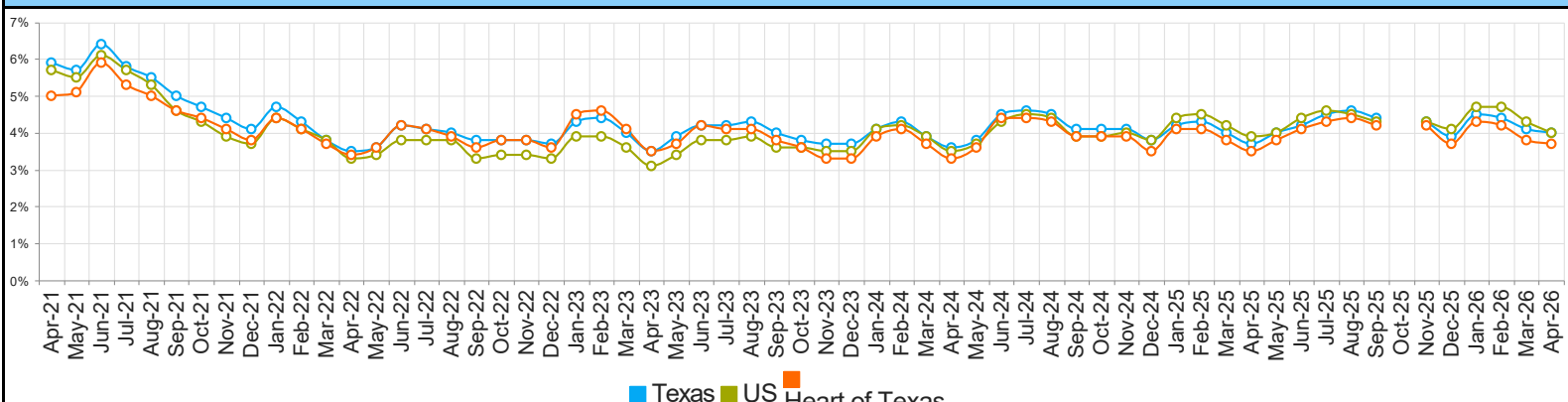
WDA Labor Force Statistics				
	Apr-26	Mar-26	Apr-25	Yearly Change
Civilian Labor Force	183,151	182,633	181,796	1,355
Employed	176,350	175,646	175,505	845
Unemployed	6,801	6,987	6,291	510
Unemployment Rate	3.7%	3.8%	3.5%	0.2%

Texas Labor Force Statistics				
	Apr-26	Mar-26	Apr-25	Yearly Change
Civilian Labor Force	15,867,910	15,852,169	15,903,872	-35,962
Employed	15,235,151	15,203,169	15,309,900	-74,749
Unemployed	632,759	649,000	593,972	38,787
Unemployment Rate	4.0%	4.1%	3.7%	0.3%

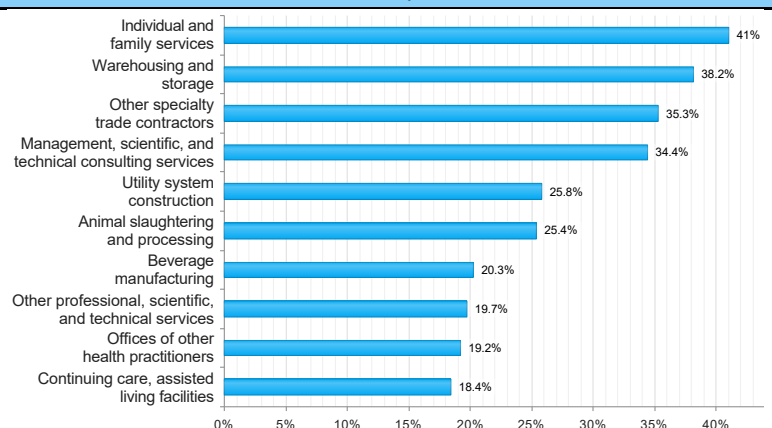
US Labor Force Statistics				
	Apr-26	Mar-26	Apr-25	Yearly Change
Civilian Labor Force	169,548,000	170,102,000	170,650,000	-1,102,000
Employed	162,781,000	162,764,000	164,069,000	-1,288,000
Unemployed	6,768,000	7,337,000	6,582,000	186,000
Unemployment Rate	4.0%	4.3%	3.9%	0.1%

Continued Claims for the Week of the 12th				
	Apr-26	Mar-26	Apr-25	Yearly Change
WDA	961	1,015	977	-16
Texas	117,577	123,687	127,906	-10,329

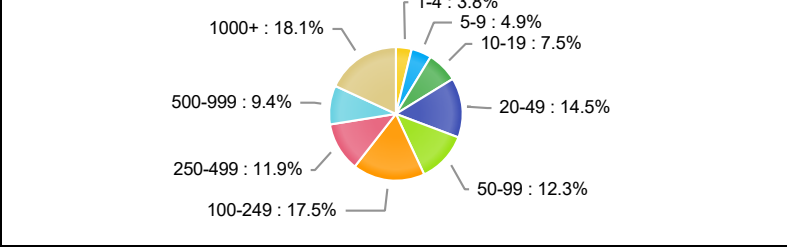
## Historical Unemployment Rates



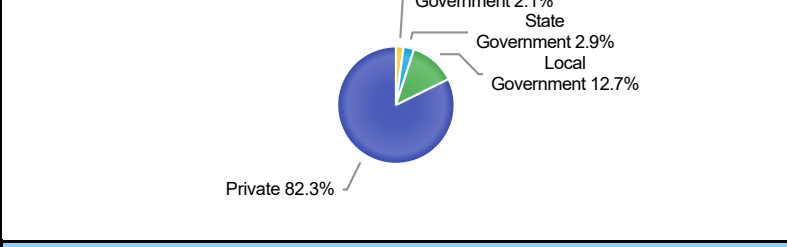
## Projected Top Ten Fastest Growing Industries in WDA (% Growth 2022-2032)



## Employment by Size Class (4th Quarter 2025)



## Employment by Ownership (4th Quarter 2025)



Average Weekly Wage (4th Quarter 2025)					
	Q4 2025	Q3 2025	Q4 2024	Quarterly Change	Yearly Change
WDA	\$1,257	\$1,182	\$1,206	\$75	\$51
Texas	\$1,549	\$1,444	\$1,488	\$105	\$61
US	N/A	\$1,459	\$1,506	N/A	N/A

## Employment by Industry (4th Quarter 2025, Percent Change)

Industry	Employment	% of Total	% Quarterly Change	% Yearly Change
Natural Resources and Mining	2,631	1.7%	0.0%	1.7%
Construction	11,731	7.5%	1.2%	3.2%
Manufacturing	19,485	12.4%	-0.3%	3.0%
Trade, Transportation and Utilities	29,982	19.1%	0.4%	-2.3%
Information	1,083	0.7%	0.1%	-1.6%
Financial Activities	8,842	5.6%	0.3%	0.7%
Professional and Business Services	13,669	8.7%	0.5%	-5.1%
Education and Health Services	41,821	26.7%	3.2%	-0.2%
Leisure and Hospitality	17,104	10.9%	0.2%	1.5%
Other Services	3,318	2.1%	-1.2%	-0.5%
Public Administration	7,156	4.6%	0.6%	0.3%

## Employment by Industry (4th Quarter 2025)

